

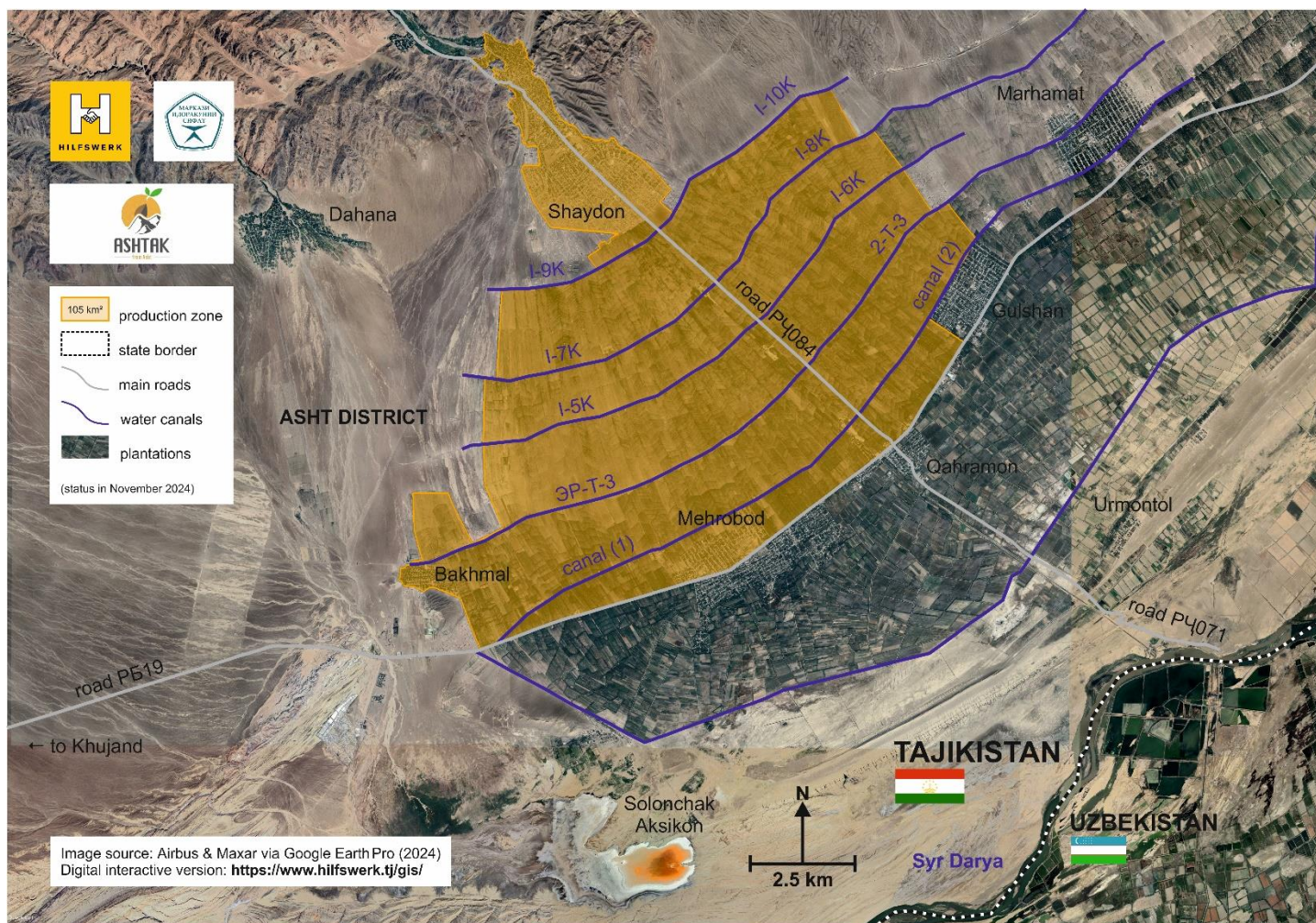
# Supplement to the Map of Production

(status: November 2024)

A digital interactive version of the map is available at <https://www.hilfswerk.tj/gis/>.

## Criteria for production zones:

- 1) one south-facing slope in the Asht District, Sughd Region
- 2) mainly jamoats of Mehrobod, Shodoba and Oshoba (but variable)
- 3) excluding slope south of the road P519 and the commune of Gulshan



Hilfswerk International (<https://www.hilfswerk.tj/>)

Vefa Business Center

Bokhtar Street 37/1, apt. No. 907

734025 Dushanbe, Tajikistan